

COUNTER BALANCE VALVE CB

ENGINEERING

1

Ref. No. P02241

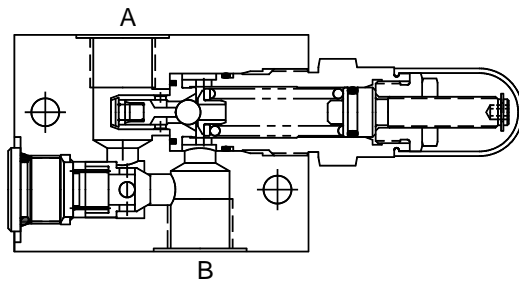
Release 01/2011

Description

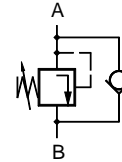
Counter balance valves are seat type valves. They offer free-flow from their port B to A and give leak free closure in opposite direction upto a predetermined pressure. This predetermined cracking pressure can be adjusted within its maximum specified range.



Section

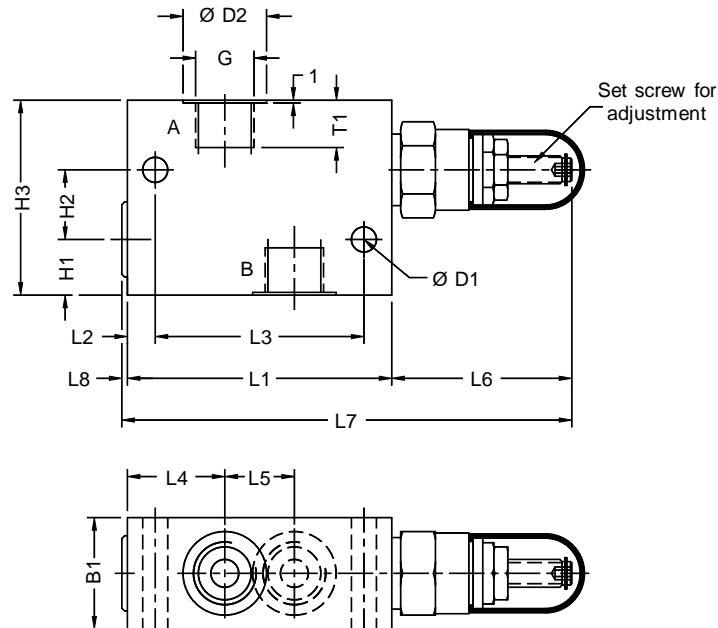


Hydraulic Symbol



Unit dimension

Dimensions in mm.



Size	L1	L2	L3	L4	L5	L6	L7	L8	H1	H2	H3	B1	G	ØD1	ØD2	T1	Mass kg
10	95	10	75	35	25	58	156	3	23	25	70	40	G1/2	9	30	17	1.95
20	140	10	110	40	45	74	218	4	25	50	100	60	G1	11	44	19	--

Polyhydron Pvt. Ltd.

78-80, Machhe Industrial Estate,
Machhe, Belgaum - 590 014. INDIA.

Phone : +91-(0)831-2411001
 Fax : +91-(0)831-2411002
 E-mail : polyhydron@gmail.com
 Website : www.polyhydron.com



COUNTER BALANCE VALVE CB

ENGINEERING

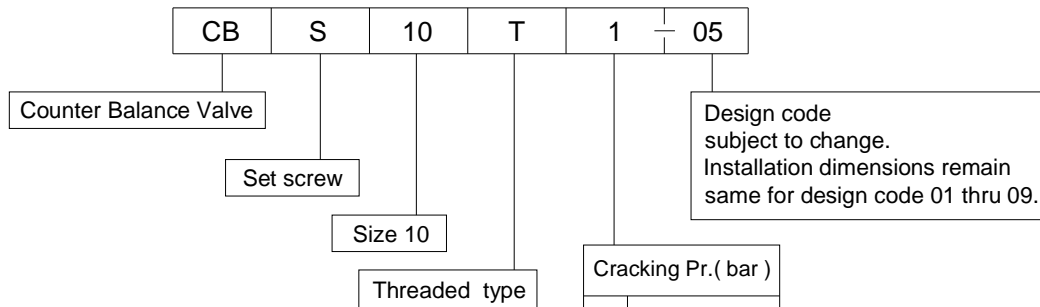
2

Ref. No. P02241

Technical specification

Construction	Direct acting, seat type.
Mounting type	Threaded port body.
Mounting position	Optional
Direction of flow	From port A to B.
Flow handling capacity (Nominal)	Size 10 30 l / min. Size 20 115 l / min.
Operating pressure	315 bar.
Cracking pressure	Refer ordering code.
Hydraulic medium	Mineral oil.
Viscosity range	10 cSt to 380 cSt.
Fluid temperature range	-20 °C to +70 °C
Fluid cleanliness requirement	As per ISO 16/13. or better.
Mass	Refer individual table.

Ordering code



Note :

Fixing screws and subplate to be ordered separately