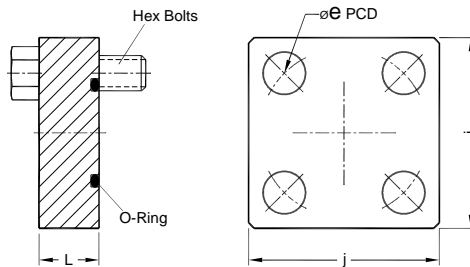


Blind Flanges

SSB/SHB

Dimensions in mm

Mounting Interface conforms to ISO 6164



Part No. Flange	Nom Flange Size	DN Size	$\varnothing e$	j	L	O - Ring ID x CSD (Viton) 90 ± 5 Shore	Hex. bolts (10.9)
PN 250 bar							
SSB - 04	1/2"	13	42	45	23	19.0 x 3.55	M8x35
SSB - 06	3/4"	19	50	50	23	25.0 x 3.55	M8x35
SSB - 08	1"	25	62	65	25	32.5 x 3.55	M10x40
SSB - 10	1.1/4"	32	73	75	32	37.5 x 3.55	M12x50
SSB - 12	1.1/2"	38	85	90	36	47.5 x 3.55	M16x60
SSB - 16	2"	51	98	100	41	56.0 x 3.55	M16x65
SSB - 20	2 1/2"	56	118	120	50	69.0 x 3.55	M20x80
SSB - 24	3"	63	145	140	60	85.0 x 3.55	M20x90
PN 400 bar							
SHB - 04	1/2"	13	42	45	23	19.0 x 3.55	M8x35
SHB - 06	3/4"	19	50	50	23	25.0 x 3.55	M8x35
SHB - 08	1"	25	62	65	25	32.5 x 3.55	M10x40
SHB - 10	1.1/4"	32	73	75	32	37.5 x 3.55	M12x50
SHB - 12	1.1/2"	38	85	90	36	47.5 x 3.55	M16x60
SHB - 16	2"	51	98	100	41	56.0 x 5.30	M16x65
SHB - 20	2 1/2"	56	118	120	50	69.0 x 5.30	M20x80
SHB - 24	3"	63	145	150	54	75.0 x 5.30	M24x90
SHB - 28	3 1/2"	70	160	160	64	85.0 x 5.30	M24x100
SHB - 32	4"	80	175	180	75	87.5 x 5.30	M30x120