



CHECK VALVE C (ISO)

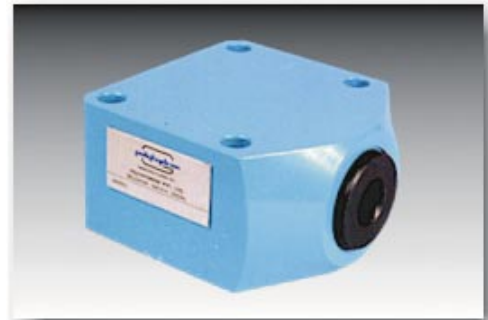
ENGINEERING

1

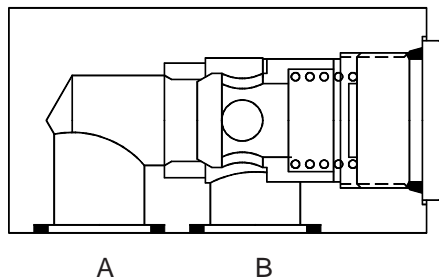
Ref. No. P06199
Release 09/2000

Description

Seat type valves
Allow free flow from port A to port B
and offer leakage free closure in opposite direction.
Available in four sizes of standard interfaces conforming to
ISO 5781
IS 10187
DIN 24340
Each model available with options of four cracking
pressures : 0.5, 1.5, 3 and 5 bar.



Section



Hydraulic Symbol



Unit Dimensions

Valve

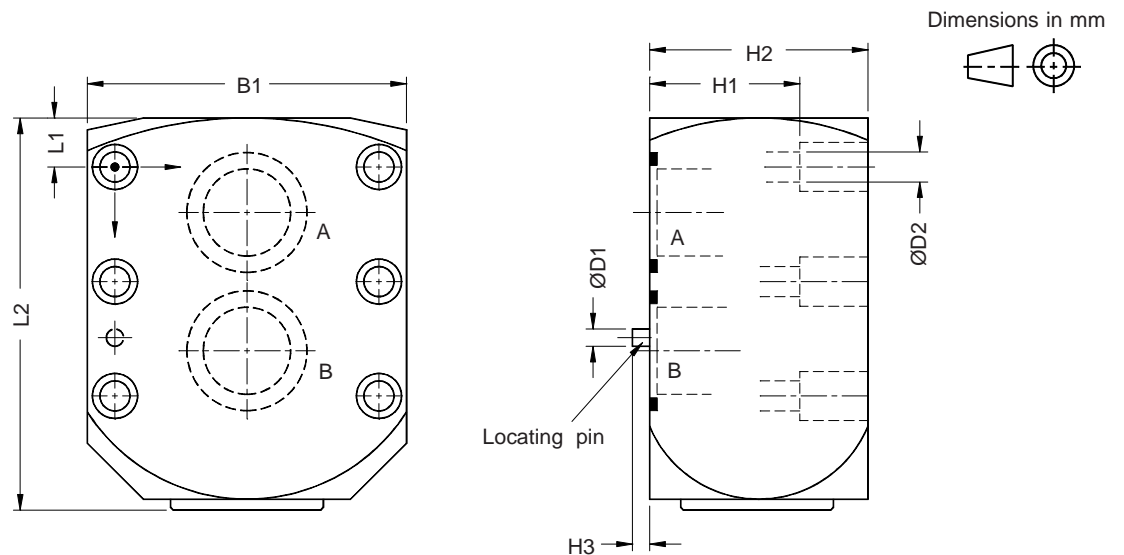


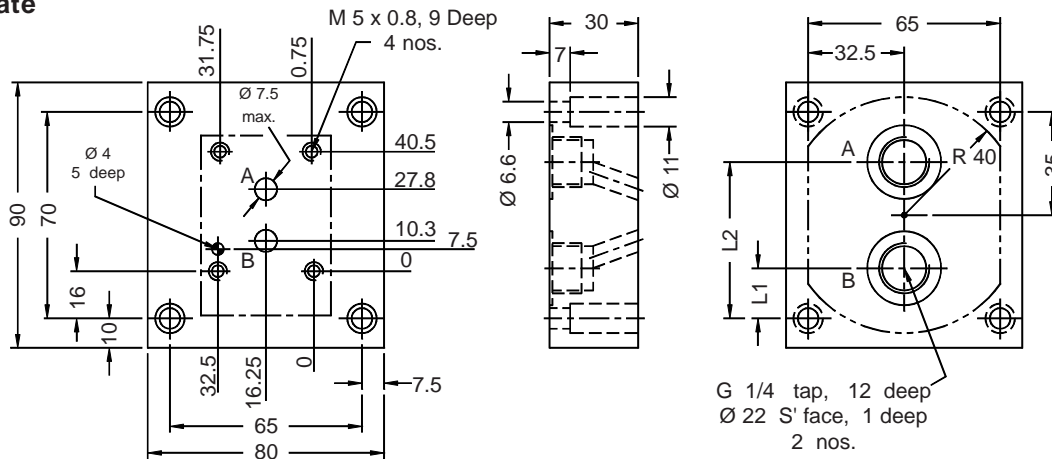
Table 1

Model	Mass Kg.	B1	H1	H2	H3	ØD1	ØD2	L1	L2	No. of fixing screws
C06	0.6	44	27	30	4	3	5.5	5.5	64.5	4
C10	1.8	88	40	40	6	6.3	11	10.5	82	4
C20	4.6	100	55	55	6	6.3	11	11	106	4
C30	10.6	117	55	80	6	6.3	11	18	144	6

Polyhydron Pvt. Ltd.
78-80, Machhe Industrial Estate,
Machhe, Belgaum - 590 014, INDIA.

Phone : +91-(0)831-411001
Fax : +91-(0)831-411002
E-mail : polyhydron@vsnl.com
Website : www.polyhydron.com

Sub plate
Size 06



Mass 1.7 Kg.

Size 10, 20 and 30.

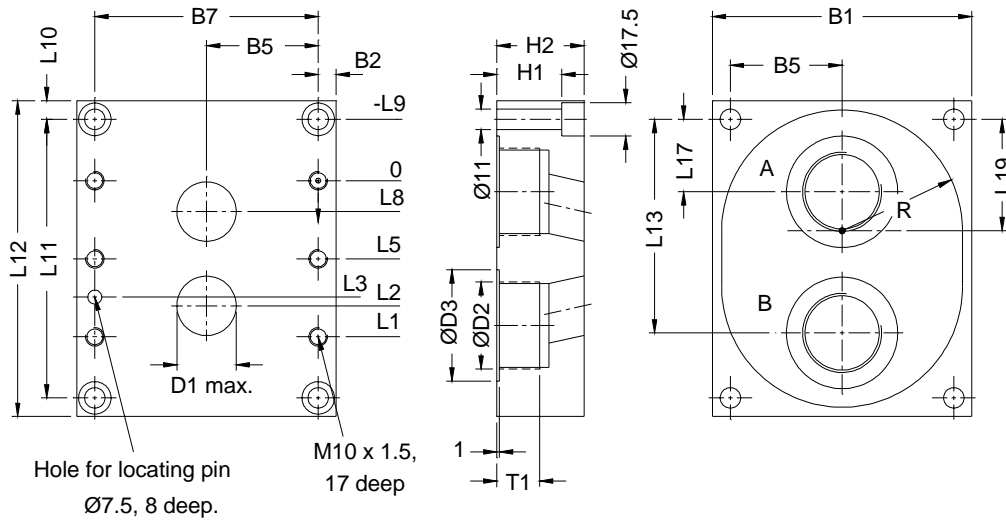


Table 2

Size	Subplate Model	Mass	B1	B2	B5	B7	D1	ØD2	ØD3	H1	H2	L1	L2	L3	L5	L8
10	SP06G04	2.5	86	9.7	33.3	66.7	14	G 1/2	30	15	29	42.9	35.7	31.8	--	7.1
20	SP08G06	5.4	112	16.3	39.7	79.4	22	G 3/4	36	25	45	60.3	49.2	44.5	--	11.1
	G1							44								
30	SP09G10	8.8	140	21.6	48.4	96.8	32	G1 1/4	54	35	47	84.1	67.5	62.7	42.1	16.7
	G1 1/2							60								

Size	Subplate Model	L9	L10	L11	L12	L13	L17	L19	R	T1	Valve fixing screw S.H. cap screw	Tightning torque
10	SP06G04	31.9	10	107	127	75	31	39	40	14	M10 X 55 L, 4 Nos.	70 Nm.
20	SP08G06	22	16	104	136	77	27	47	52	16	M10 X 70 L, 4 Nos.	
	SP08G08					82	22	18				
30	SP09G10	33	10	150	170	111	39	60	65	20	M10 X 70 L, 6 Nos.	
	SP09G12					115	33	22				



CHECK VALVE C (ISO)

ENGINEERING

3

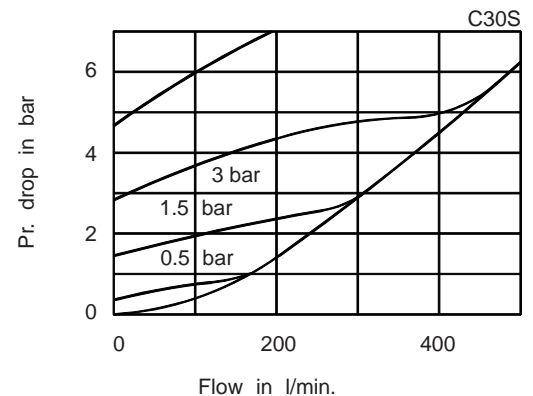
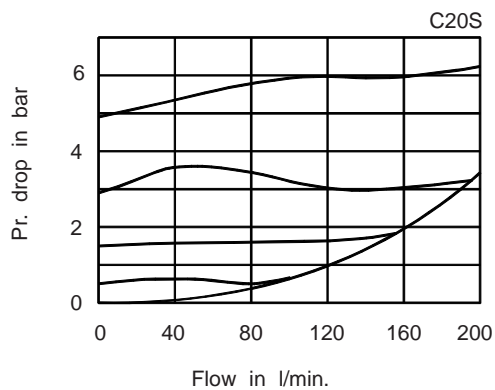
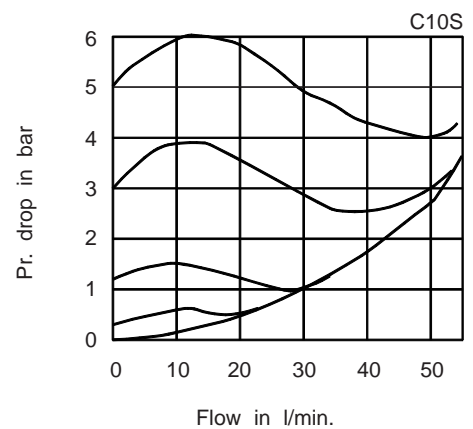
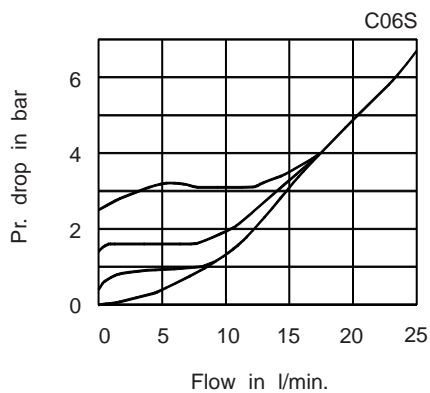
Ref. No. P06199

Technical Specifications

Construction	Seat type
Mounting	Subplate mounting Interface conforming to ISO 5781
Mounting position	Optional
Direction of flow	Free flow from port A to port B Leakfree closure in opposite direction.
Operating pressure	315 bar
Cracking pressure	0.5, 1.5, 3 or 5 bar
Viscosity range	10 cSt to 380 cSt.
Fluid temperature range	-10 °C to +80 °C.
Fluid handling capacity	Refer graph below
Mass	Refer individual table

Performance Curve

Oil used : ISO VG 68, Viscosity : 68 cSt @ 40 °C, Temp @ test : 50 °C.





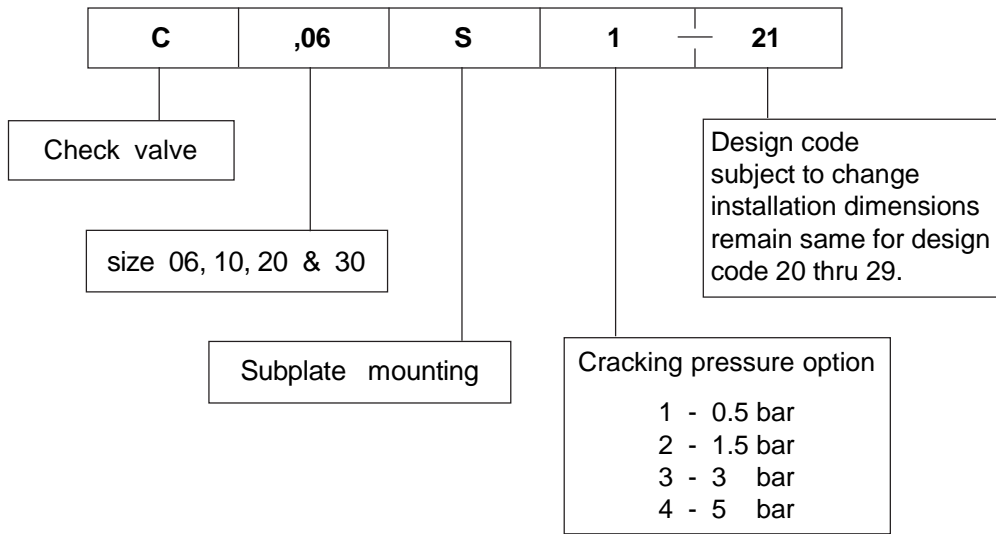
CHECK VALVE
C (ISO)

ENGINEERING

4

Ref. No. P06199

Ordering Code



Note : Subplate to be ordered separately.