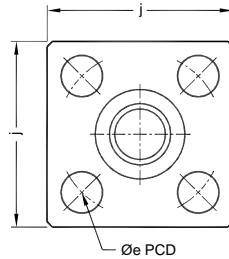
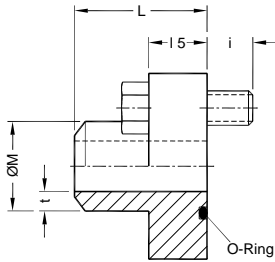


Buttweld Solid Flanges

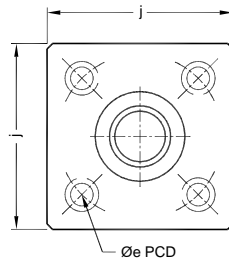
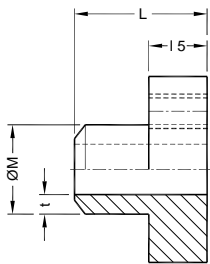
SBI / SBIC

Dimensions in mm

Mounting Interface conforms to ISO 6164



Flanges
Model : **SBI / HBI**



Counter Flanges
Model : **SBIC / HBIC**

* Not included in ISO 6164 std

| Part No. Flange | Part No. Counter Flange | Nom Flange Size | DN Size | ØM | Pipe Sch | t | Ø e | 15 | j | i | L | O - Ring ID x CSD (Viton) 90 ± 5 Shore | Hex. bolts (10.9) |
|-------------------|-------------------------|-----------------|---------|-------|----------|-------|-----|----|-----|----|-----|--|-------------------|
| PN 250 bar | | | | | | | | | | | | | |
| SBI-21.3-80 | SBIC-21.3-80 | 1/2" | 13 | 21.3 | 80 | 3.70 | 42 | 23 | 45 | 12 | 30 | 19.0 x 3.55 | M8x35 |
| SBI-26.6-80 | SBIC-26.6-80 | 3/4" | 19 | 26.6 | 80 | 3.92 | 50 | 23 | 50 | 12 | 35 | 25.0 x 3.55 | M8x35 |
| SBI-33.4-80 | SBIC-33.4-80 | 1" | 25 | 33.4 | 80 | 4.54 | 62 | 25 | 65 | 15 | 40 | 32.5 x 3.55 | M10x40 |
| SBI-42.2-160 | SBIC-42.2-160 | 1.1/4" | 32 | 42.2 | 160 | 6.35 | 73 | 32 | 75 | 18 | 45 | 37.5 x 3.55 | M12x50 |
| SBI-48.3-160 | SBIC-48.3-160 | 1.1/2" | 38 | 48.3 | 160 | 7.13 | 85 | 36 | 90 | 24 | 50 | 47.5 x 3.55 | M16x60 |
| SBI-60.3-160 | SBIC-60.3-160 | 2" | 51 | 60.3 | 160 | 8.71 | 98 | 41 | 100 | 24 | 60 | 56.0 x 3.55 | M16x65 |
| SBI-73.0-160 | SBIC-73.0-160 | 2 1/2" | 56 | 73.0 | 160 | 9.52 | 118 | 50 | 120 | 30 | 70 | 69.0 x 3.55 | M20x80 |
| SBI-88.9-160 | SBIC-88.9-160 | 3" | 63 | 88.9 | 160 | 11.00 | 145 | 60 | 140 | 30 | 80 | 85.0 x 3.55 | M20x90 |
| *SBI-114.3-160 | SBIC-114.3-160 | 4" | 80 | 114.3 | 160 | 13.50 | 175 | 75 | 180 | 45 | 135 | 112 x 3.55 | M30x120 |
| PN 400 bar | | | | | | | | | | | | | |
| HBI-21.3-160 | HBIC-21.3-160 | 1/2" | 13 | 21.3 | 160 | 4.75 | 42 | 23 | 45 | 12 | 40 | 19.0 x 3.55 | M8x35 |
| HBI-26.6-160 | HBIC-26.6-160 | 3/4" | 19 | 26.6 | 160 | 5.56 | 50 | 23 | 50 | 12 | 45 | 25.0 x 3.55 | M8x35 |
| HBI-33.4-160 | HBIC-33.4-160 | 1" | 25 | 33.4 | 160 | 6.35 | 62 | 25 | 65 | 15 | 50 | 32.5 x 3.55 | M10x40 |
| HBI-42.2-XXS | HBIC-42.2-XXS | 1.1/4" | 32 | 42.2 | XXS | 9.70 | 73 | 32 | 75 | 18 | 55 | 37.5 x 3.55 | M12x50 |
| HBI-48.3-XXS | HBIC-48.3-XXS | 1.1/2" | 38 | 48.3 | XXS | 10.16 | 85 | 36 | 90 | 24 | 60 | 47.5 x 3.55 | M16x60 |
| HBI-60.3-XXS | HBIC-60.3-XXS | 2" | 51 | 60.3 | XXS | 11.07 | 98 | 41 | 100 | 24 | 70 | 56.0 x 5.30 | M16x65 |
| HBI-73.0-XXS | HBIC-73.0-XXS | 2 1/2" | 56 | 73.0 | XXS | 14.02 | 118 | 50 | 120 | 30 | 80 | 69.0 x 5.30 | M20x80 |
| HBI-88.9-XXS | HBIC-88.9-XXS | 3" | 63 | 88.9 | XXS | 15.24 | 145 | 54 | 150 | 36 | 105 | 75.0 x 5.30 | M24x90 |
| HBI-101.6-XXS | HBIC-101.6-XXS | 3 1/2" | 70 | 101.6 | XXS | 16.15 | 160 | 64 | 160 | 36 | 105 | 85.0 x 5.30 | M24x100 |
| HBI-114.3-XXS | HBIC-114.3-XXS | 4" | 80 | 114.3 | XXS | 17.12 | 175 | 75 | 180 | 45 | 135 | 87.5 x 5.30 | M30x120 |