

Banjo Couplings

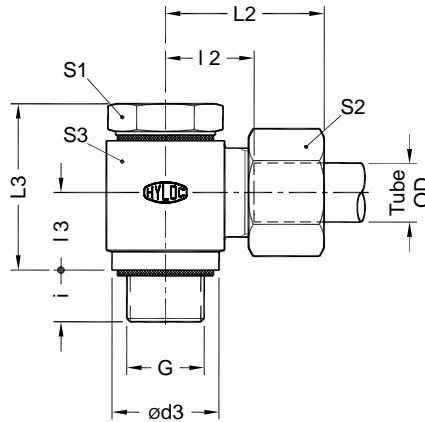
HSWV-G

Dimensions in mm

DIN Fittings

Metric Tube end as per ISO 8434

Male stud - BSPP (G) threads



Part No.	Series	Tube od	BSP thread G	ød3	i	I 2	I 3	* L2	L3	S1	S2	S3
HSWV06PLG	Light L 250 bar	6	G 1/8 A	15	8	12.5	12.0	27.5	28.0	19	14	19
HSWV08PLG		8	G 1/4 A	20	12	14.0	15.0	29.0	33.0	19	17	22
HSWV10PLG		10	G 1/4 A	20	12	15.0	15.0	31.0	33.0	19	19	22
HSWV12PLG		12	G 3/8 A	24	12	17.5	18.0	32.5	40.0	22	22	27
HSWV15PLG		15	G 1/2 A	29	14	20.0	21.0	36.0	45.0	27	27	30
HSWV18PLG	100 bar	18	G 1/2 A	29	14	19.5	21.0	37.0	45.0	27	32	30
HSWV22PLG		22	G 3/4 A	35	16	27.0	24.0	44.5	53.0	32	36	41
HSWV28PLG		28	G 1 A	43	18	29.5	29.5	48.0	63.5	41	41	46
HSWV35PLG	100 bar	35	G1 1/4 A	53	20	35.0	33.0	57.5	74.0	50	50	55
HSWV42PLG		42	G1 1/2 A	59	22	40.0	38.5	63.0	83.0	60	60	70
HSWV06PSG	Heavy S 400 bar	6	G 1/4 A	20	12	16.0	15.0	31.0	33.0	19	17	22
HSWV08PSG		8	G 1/4 A	20	12	16.0	15.0	31.0	33.0	19	19	22
HSWV10PSG		10	G 3/8 A	24	12	18.0	18.0	35.5	40.0	22	22	27
HSWV12PSG		12	G 3/8 A	24	12	18.0	18.0	34.5	40.0	22	24	27
HSWV16PSG		16	G 1/2 A	29	14	21.5	21.0	41.0	45.0	27	30	32
HSWV20PSG	400 bar	20	G 3/4 A	35	16	28.0	24.0	50.5	53.0	32	36	41
HSWV25PSG		25	G 1 A	43	18	31.0	29.5	56.0	63.5	41	46	50
HSWV30PSG		30	G1 1/4 A	53	20	36.5	33.0	65.0	74.0	50	50	60
HSWV38PSG	38	G1 1/2 A	59	22	41.0	38.5	73.0	83.0	60	60	70	

* Dimensions given are approx figures with tightened nut.